



# Project Supply Chain for Microsoft Dynamics® AX

AX  
Microsoft  
Dynamics

Improve project profitability and delivery performance with the ability to plan, track, control and cost manufacturing and procurement activity by project.

**What would it mean to your business if you had the flexibility to apply comprehensive multi-level project pegging and controls exactly where you need them and only where you need them?**

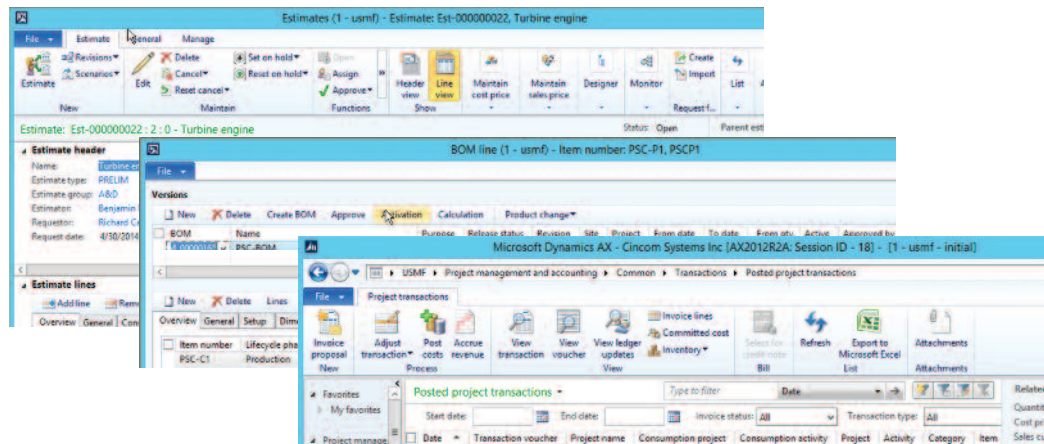
Would it enable you to . . .

- Better track product-related project costs?
- Better manage customer-specific or prototype product configurations on the shop floor?
- Improve production visibility and productivity?
- Drive cost reduction through improved use of production resources
- More efficiently satisfy process compliance, contract compliance and reporting requirements?

Cincom's Project Supply Chain capabilities manage differences in product specifications, quality requirements, approved suppliers and applicable documents for the same product across different projects. You can segregate inventory by project or company-owned and track unit costs by project to support government regulatory requirements.

**With Cincom Project Supply Chain capabilities for Microsoft Dynamics AX, you can do all that and more.**

- Efficiently manage any combination of commercial and project-based production through common facilities and resources.
- Comply with government costing and reporting requirements as a natural extension of operations.



## Use for:

- Commercial engineer-to-order (ETO) production
- Contract-driven manufacturing
- Prototype production

## Benefits:

- **Consistently deliver customer-specific orders and contracts on time, on budget and on spec.** Effectively plan and control every aspect of inventory, production and procurement by project and activity wherever necessary.
- **Gain clear visibility of project costs.** Collect detailed, accurate product costs by project, including inventory transfers between projects. Ensure that product and project cost ledgers are in sync.
- **Maintain competitive pricing by streamlining project control.** Automate controls that ensure proper use of inventory, specifications and customer-furnished materials without the need for constant manual effort.
- **Maximize production efficiencies.** Apply full project segregation where necessary while using non-project methods wherever possible.
- **Reduce the cost of compliance.** Automate collection of the production information needed to comply with required regulatory or customer reporting.

## Features

<b>Project-based planning</b>	Project/activity segregated MRP across projects at all BOM levels utilizing pegged demand, supply orders and inventory within and across legal entities.
<b>Project-pegged inventory</b>	Link stockroom and supply orders to specific projects and activities to support project-based planning and costing.
<b>Configurable project control levels</b>	Item-specific indicators for project, non-project or optional project control provide the flexibility to manage mixed-mode operational models in blended project and non-project/commingled environments within and across projects and BOMs.
<b>Project-specific product information</b>	Item planning parameters, BOMs, routes, approved supplier list, quality requirements and document flowdown provide the ability to manage varying requirements across multiple projects.
<b>Project-segregated product costs</b>	Pegged unit-cost prices and general ledger posting by product and project provide an accurate financial picture of production activity across product and project costing.
<b>Integrated Performance Management</b>	Automated collection of in-process and planned cost data from production enables accurate cost projections for Estimate to Complete (ETC) and Estimate at Complete (EAC) analysis

The screenshot displays the 'Project dimension groups (1)' configuration window. The left pane lists project control types: CP\_Opt (Custom project, optional control), None (Not controlled, Do not change), Prj\_Ctrl\_O (Optional project control), and Prj\_Ctrl\_P (Project controlled). The main area shows the configuration for 'CP\_Opt'. The 'Control' section has 'Project control' set to 'Optional' and 'Do not inherit parent values' set to 'Not controlled'. A red arrow points to the 'Optional' dropdown. An inset window shows the configuration for 'Prj\_Ctrl\_O', with 'Do not inherit parent values' set to 'Do not inherit parent values' (checkbox checked), and a red arrow pointing to this checkbox.

Create and modify project dimension groups with point and click ease.

**World Headquarters** • Cincinnati, OH USA • US 1-800-224-6266 • International 1-513-612-2769 • [info@cincom.com](mailto:info@cincom.com) • [cincom.com](http://cincom.com)  
**Americas:** Brazil [cincombr@cincom.com](mailto:cincombr@cincom.com) • Ontario, Canada [NOBrien@cincom.com](mailto:NOBrien@cincom.com) • Quebec, Canada [infoquebec@cincom.com](mailto:infoquebec@cincom.com)  
**Europe:** Brussels, Belgium • Lyon and Paris, France • Schwalbach/Ts., Germany • Turin, Italy • Monaco • Culemborg, The Netherlands  
 Madrid, Spain • Maidenhead, United Kingdom [InfoEurope@cincom.com](mailto:InfoEurope@cincom.com)  
**Greater Asia Pacific (GAP):** Sydney and Melbourne, Australia [info@cincom.com.au](mailto:info@cincom.com.au) • New Delhi, India [info\\_india@cincom.com](mailto:info_india@cincom.com)  
 Tokyo, Japan [info@cincom.com](mailto:info@cincom.com)

Cincom and the Quadrant Logo are registered trademarks of Cincom Systems, Inc. Microsoft and Microsoft Dynamics are registered trademarks of Microsoft Corporation. All other trademarks belong to their respective companies.  
 © 2016 Cincom Systems, Inc. FORM MBSUS1501025 1/16 Printed in U.S.A. All Rights Reserved

