

## SOLUTION OVERVIEW

### Problem

Having real-time, ad hoc, relational access to the data stored in the SUPRA PDM DBMS. Many SUPRA PDM users have implemented relational access strategies to their PDM data, usually with a custom set of procedures. User-written procedures can be labor-intensive, difficult to understand by others and hard to change. In addition, any new requirements for additional data can involve even more complex development projects requiring knowledge of PDM application programming and PDM data structures.

### Challenge

To provide the ability for SUPRA end-users to access their PDM data in real time using relational access tools. SUPRA DBAs must be able to implement this relational access to PDM data quickly and easily, and meet the end-users' performance expectations.

### Solution

Provide relational access to SUPRA PDM data. This solution would:

- Provide an easy-to-install and use relational interface to PDM data
- Require no custom programming to access the PDM data
- Require no rewriting of applications to get to the PDM data

# SQL Access for Cincom<sup>®</sup> SUPRA<sup>®</sup> PDM

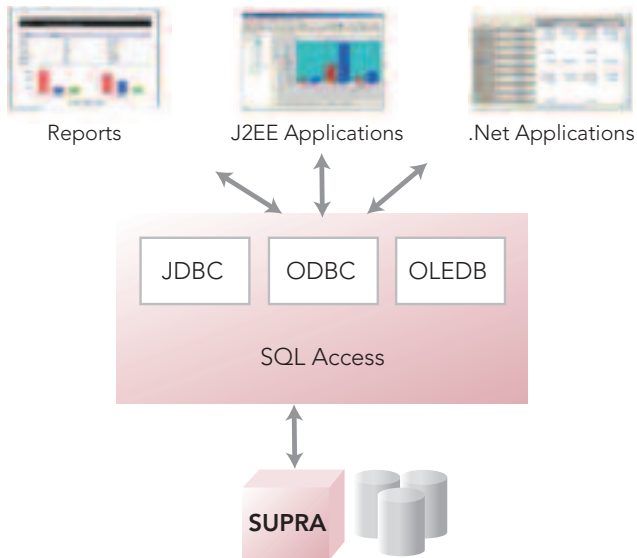
Real-time, Relational Access to Your Operational Data



As part of the SUPRA solution, SQL Access enables you to access data using standard tools you use every day, since it supports the industry-standard application programming interfaces. SQL Access eliminates the custom code necessary to access your PDM data for analytical purposes, or to integrate a data source into a website, which means less testing, greater reliability and faster development. Using SQL to access data in real time, SQL Access minimizes the time required to develop new applications, reduces development costs and extends the life of your SUPRA PDM DBMS-based systems.

SQL Access provides a wide range of options for data access. Support for JDBC is provided enabling support for J2EE applications and tools. ODBC and OLEDB drivers are provided enabling support for .Net applications and tools. This is shown in the following image.

SQL Access puts you in touch with your live operational data without changes to your existing application suite. SQL Access helps you transform your data into useful information that you can use to meet both immediate objectives and long-term business goals.



SQL Access provides you with the following advantages:

- You can access current information without the need to migrate data.
- Changes are not required to operational data or existing applications.
- Transactional access is available if needed.
- Third-party tools can access SUPRA data using standard SQL and SQL-based interfaces.

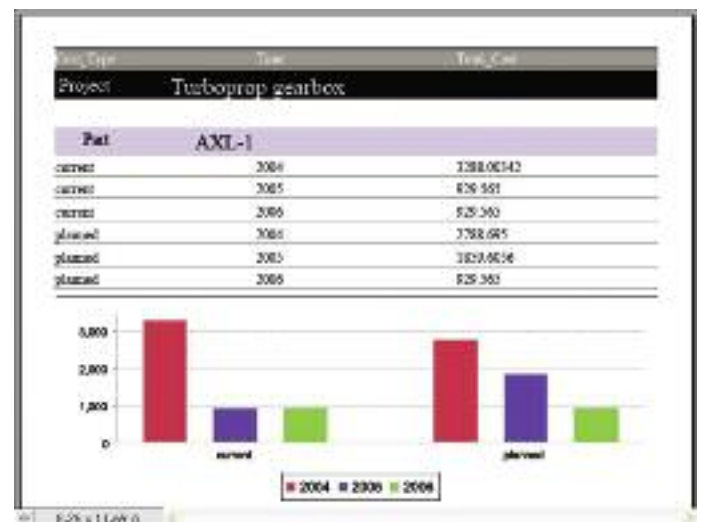
## Optimized for SUPRA

Since SUPRA PDM supports a virtually infinite number of data models, and because the data model itself can be implemented in the application logic, SQL Access provides mapping tools that facilitate the creation of optimized relational maps of the PDM's non-relational data.

SQL Access optimizes access to SUPRA data based on the information that it retrieves from the PDM directory (linkpaths, indices and control keys). The metadata for the PDM fields are mapped into an entity called a foreign table and stored in a repository. The foreign table definitions (relational maps) are made available to the client. SQL Access maintains joining, query optimization, query execution, row qualification data and PDM Directory information.

## Developing Applications

SQL Access allows applications to access SUPRA PDM files as standard SQL tables. To enable this, you simply define the SUPRA PDM files as foreign tables. Foreign table definitions are somewhat like SQL view definitions. You define the fields to access in a PDM file, similar to the way you would define the columns to access in a table using an SQL view.



## Easy to Use

From defining the SUPRA PDM database and creating a foreign table (with field names and data types) to retrieving the data, it is a simple process. The following example shows how easy it is to use Visual SQL, with its dialog boxes, to complete the required information.

For example:

1. Define the PDM Database by selecting "Register New." This stores the definition in the SQL Access named SupraRA.

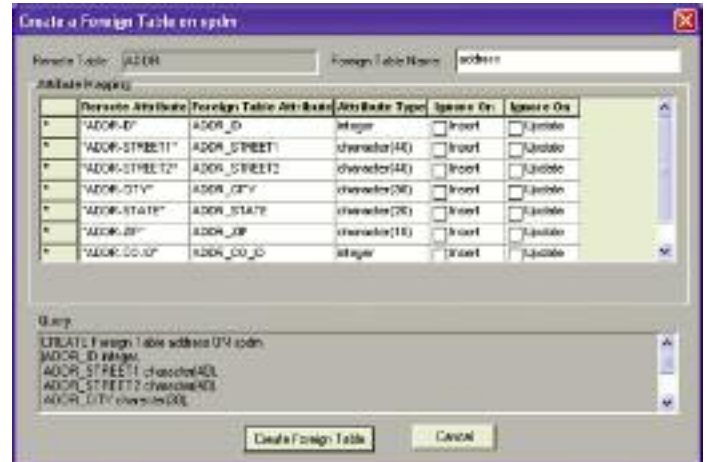


2. Next, create a foreign table (map) of a PDM file.

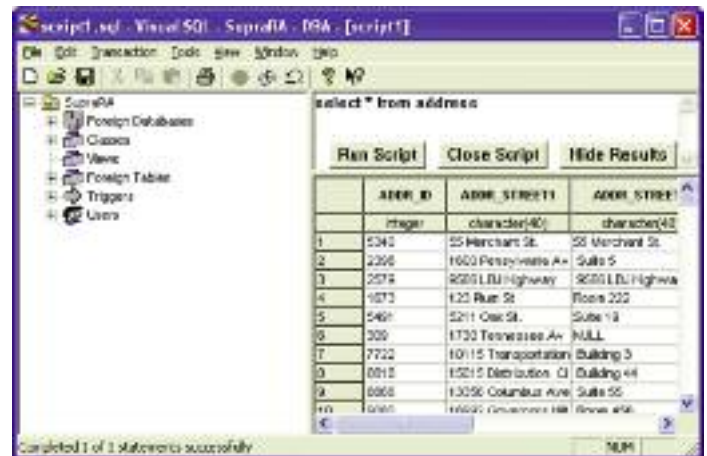
The field names and data types will be retrieved from the PDM Directory by simply clicking "Create Foreign Table."



3. Then review the definition making any required changes (e.g., foreign table name, column/attribute names) prior to saving it by simply clicking "Create Foreign Table."



4. And current data can be retrieved from the PDM database.



## Supported Platforms

### Client Environment

#### Hardware

Windows PC

#### Operating System

Windows 2000  
Windows XP  
Windows Server 2003

### Server Environment - Middleware

#### Hardware

Windows PC

#### Operating System

Windows 2000  
Windows XP  
Windows Server 2003

RS6000

AIX

### Database Server

#### Hardware

IBM z/Series

HP Alpha and  
Itanium Servers

HP-UX Unix

#### Op. System

z/OS

OpenVMS

#### SUPRA PDM Release

2.7.00 and higher

2.5.00 and higher

1.3.10 and higher

## SQL Access Added Value

- Dynamic and real-time access to PDM data using the industry-standard ODBC relational API.
- You can use common desktop tools to access non-relational PDM data that is difficult to manipulate outside of its SUPRA environment.
- You can access your PDM data directly in real time, unlike other approaches that copy the PDM data into relational data sources for future querying.

## About Cincom

For over 40 years, Cincom's software and services have helped thousands of clients worldwide simplify the management of complex business processes. Cincom specializes in the areas of business where simplification brings the greatest value to managers who want to grow revenue, control costs, minimize risk and achieve rapid ROI better than their competitors.

Cincom serves clients on six continents including BMW, Citibank, Boeing, Ericsson, Penn State University, Milacron, Siemens, Rockwell Automation and Trane.

Cincom, the Quadrant Logo, SUPRA and Simplification Through Innovation are registered trademarks of Cincom Systems, Inc. All other trademarks belong to their respective companies.

© 2011 Cincom Systems, Inc.  
FORM DB060822-2 10/11  
Printed in U.S.A.  
All Rights Reserved

World Headquarters • Cincinnati, OH USA • US 1-800-2CINCOM  
Fax 1-513-612-2000 • International 1-513-612-2769  
E-mail [info@cincom.com](mailto:info@cincom.com) • [www.cincom.com](http://www.cincom.com)

